

Conveyer Belt Take-Ups



Fig 1: Take-ups overhead view

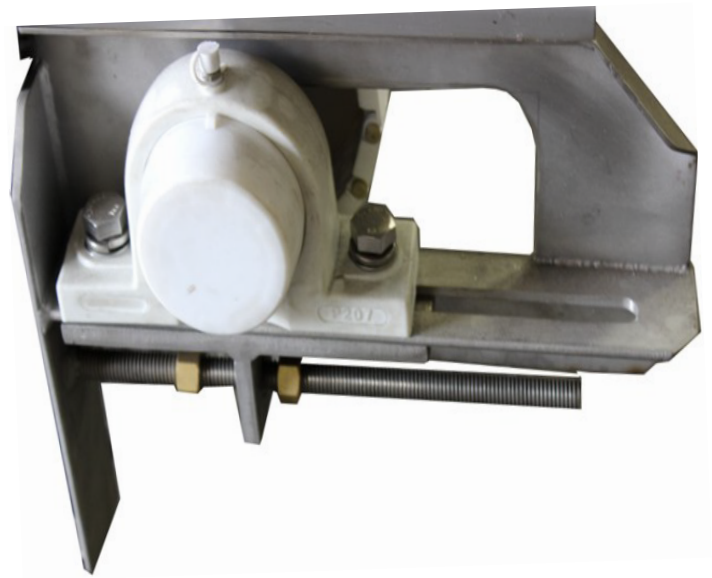


Fig 2: Take-ups side view

Our take-ups ensure that your conveyor belt remains at optimal tension for smooth product delivery. Sold in sets of 2 and made from 100% stainless steel, proper care of take-ups will ensure that you never have to worry about slack on a conveyor belt. Brass nuts are included to prevent seizing, saving you from replacing all thread, or tension bars.

\$160.00 + Tax/Shipping